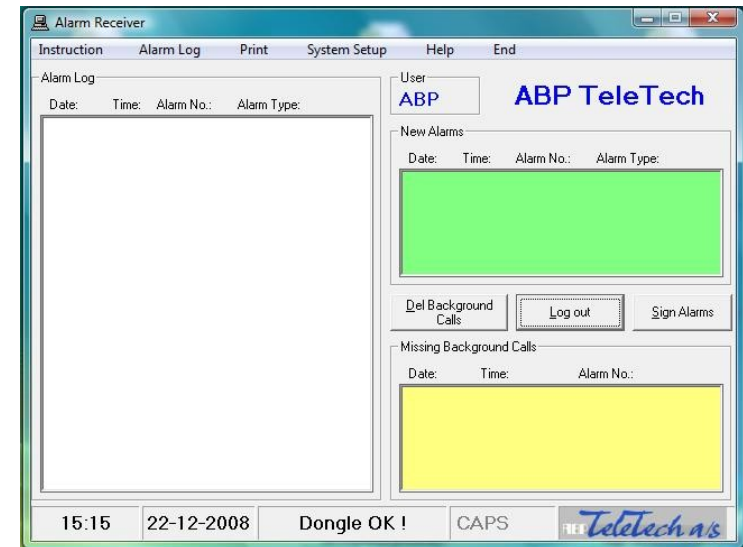


 *Teletech a/s*

Alarm Receiver

PC software

 *Teletech a/s*



Installation Guide

Rev. 1.0 EN

System requirements

PC running Windows XP SP2

One free COM port (for the DTMF MODEM)

32 MB RAM

CD-ROM drive

Minimum 20 MB free hard disk space (depending on the size of the log files)

1 free parallel port or 1 free USB port (for the activation dongle)

1 DTMF MODEM (DTI1200 or similar)

Dongle (for activating the program).

Package contents

Qty:

1 CD-ROM

Installation

- ⇒ Run "D:\ Alarmreceiver 5.0.0.3\setup.exe"
(Replace D: with the drive letter for your CD/DVD drive)

Follow the instructions on the screen.

First time you run the AlarmReceiver program

- ⇒ Open the AlarmReceiver program
(START-Programs-ABP TeleTech-AlarmReceiver).
- ⇒ When the program starts you will be asked to key in your company name
(see figure 1).

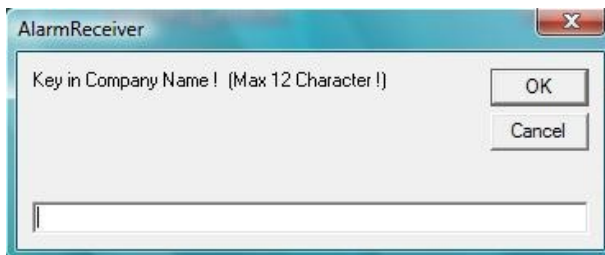


Figure 1
Key in company name

- ⇒ Select the com port to which your DTMF MODEM is connected
(see figure 2).

Notice

You can run the AlarmReceiver program as a trial version without a dongle.

The trial version can maximum be run 30 times and is limited to enter 3 lift alarms into the database.

⇒ Enter your initials (see figure 8).

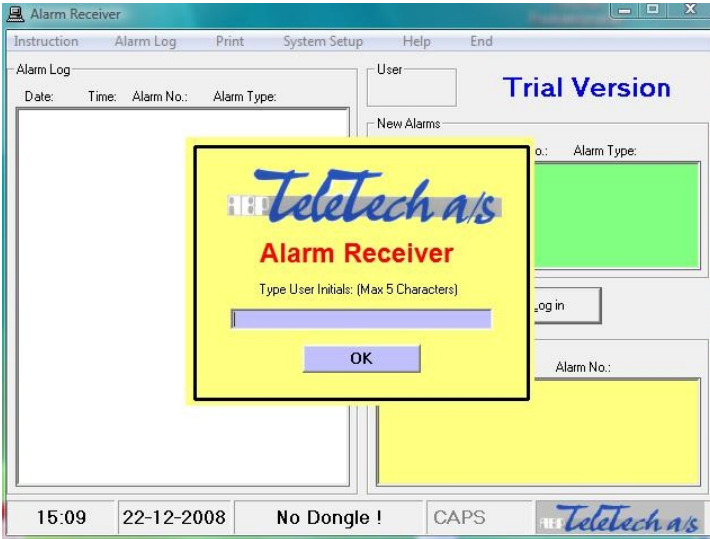


Figure 8
Enter initials

The program is now running and ready to receive alarm and check calls. (see figure 9).

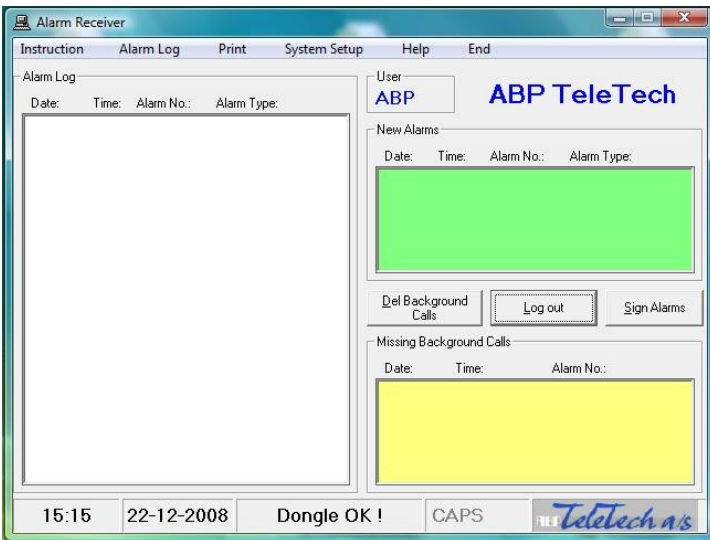


Figure 9
AlarmReceiver running

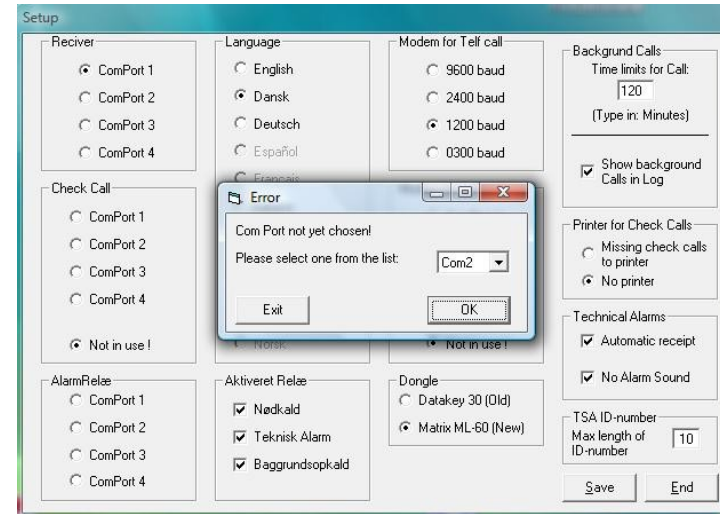


Figure 2
Select COM port

⇒ Select your preferred setup, language, check call frequency etc. (see figure 3). You can always change the setup at a later point if necessary.

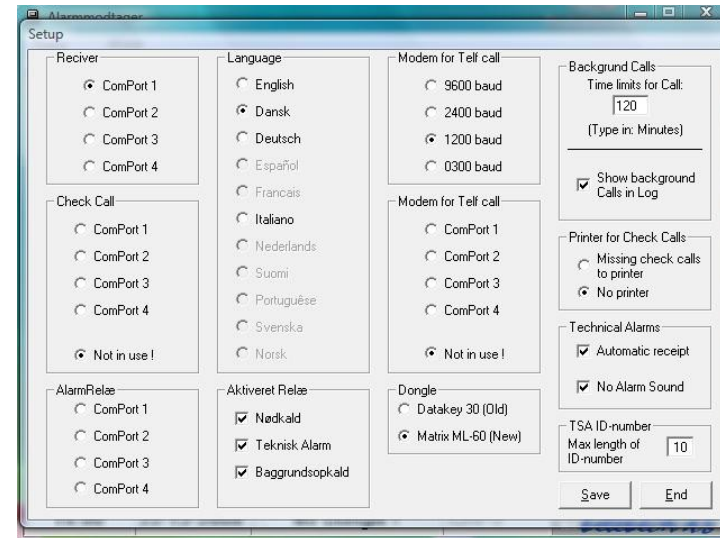


Figure 3
Setup

⇒ When you have finished; click "Save". You will be reminded to restart the program for the changes to take effect (see figure 4).

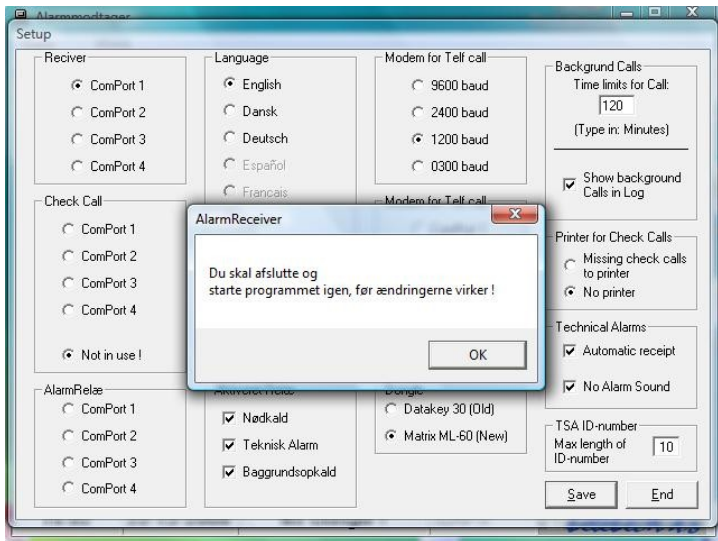


Figure 4
Restart reminder

- ⇒ Click “OK” (see Figure 4)
- ⇒ Click “End” (see Figure 4)
- ⇒ Click “Afslut” to end the program for the changes to take effect (language etc.) (see Figure 5)

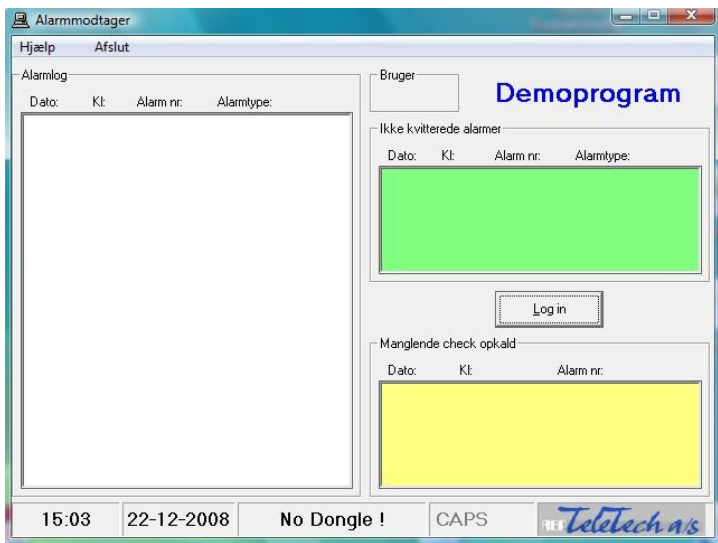


Figure 5
Default login screen

- ⇒ Connect the dongle to a parallel or USB port (depending on type)
- ⇒ Connect the DTMF MODEM
- ⇒ Open the AlarmReceiver program (START-Programs-ABP TeleTech-AlarmReceiver).
- ⇒ Click on “Log in” (see figure 6).

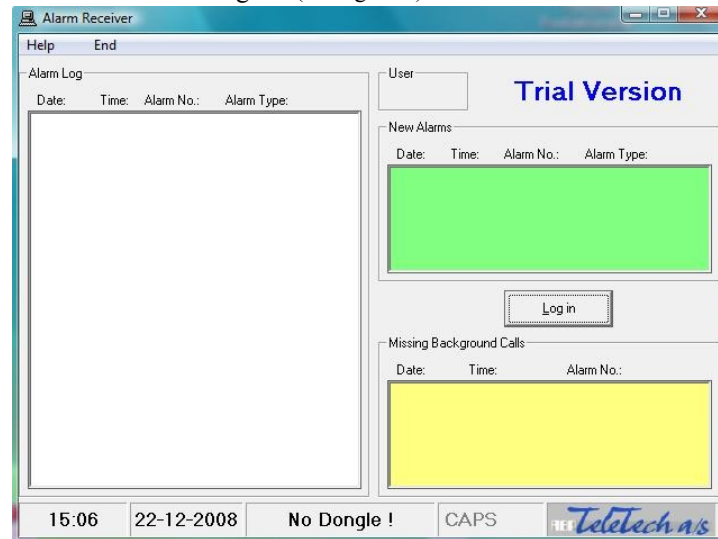


Figure 6
login screen

- ⇒ Enter your password (the default password is "tele")(see figure 7).

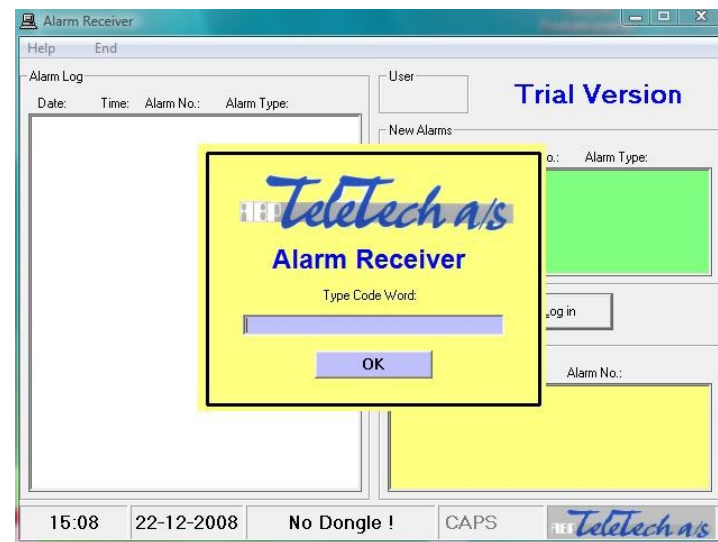


Figure 7
Enter password